



gateways

because there's more
than one way to be educated



Impact Report 23/24

A WOHL RONSON PARTNERSHIP

“

My mission has always been to offer an alternative path for those who have struggled to stay in mainstream education due to social, emotional and mental health challenges, giving them a different way to learn without the pressure of conforming to traditional systems. Not all students thrive in the same environment.

At Gateways, we provide students with the freedom to succeed in their own way. In our new independent purpose built space, we are more equipped than ever to provide the focused and holistic support our students need. Our first year in this new home hasn't just been a new chapter - it's been an exciting leap in our journey to transform young lives.

Laurence Field, Founder



1.7m

young people persistently missed school... an alarming

{ 800,000 }

increase since pre-pandemic

Josh is 15 years old and since starting secondary school, his attendance fell from

96%
↓ to ↓
34%



Josh suffers from social anxiety, which first presented around 6 months into starting his new school.

Josh's parents have sought help from medical professionals, social workers and school counsellors.



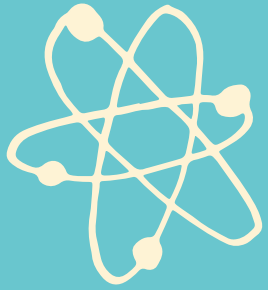
His mum eventually had to change careers and find a new job that allowed her to work remotely.



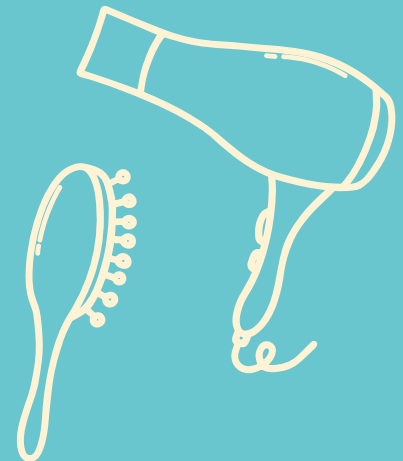
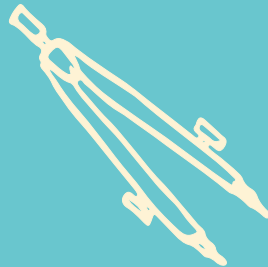
Josh's parents had nowhere to turn, they were in a really dark place. And then there was a glimmer of hope when they were introduced to Gateways, a new alternative education provider that opened in September 23. *Josh joined that October.*



76 students, including Josh, all of whom had previously been persistently absent from school, attended weekly lessons in its new purpose built home in Hendon.



Gateways offers a diverse curriculum covering 12 subjects, including Maths, English, Science, Life Skills, Hair and Beauty, Cooking, Gym Instruction, Art and IT.



Social ~~exclusion~~

increases the risk of self-harm
and suicidal ideation

Gateways received 125 admission enquiries last year from distressed parents, carers and refereeing organisations.



122 teaching hours were delivered each week. Josh attended classes in Maths and English and made new friends in his weekly BTEC Home Cooking Skills class and his GCSE Science lessons, where virtual reality headsets are used as a teaching aid!

Absenteeism
has doubled

in the last 2 years across UK schools

Gateways has partnerships with 23 referring organisations, schools, local authorities and other charities too.



Josh was introduced and referred to Gateways by another Jewish charity. Part of his journey at Gateways is a weekly therapy session.



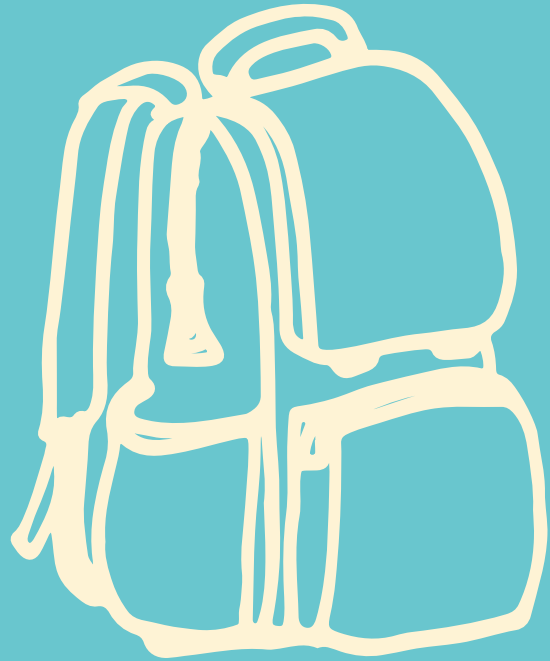
636 therapy hours

were delivered in 2023/24, including art therapy, set in purposefully designed rooms.



1 in 10

young people are NEET
(not in education, employment, or training)



21% of students were eligible for assistance through Gateways' hardship fund, including food vouchers and travel assistance.





Students attending Gateways have an average attendance rate of:

✦ ✦ ✦ **91%**

...compared to a prior mainstream schools average of:

!! **34%**

In Sept 2023, Gateways students were asked to score their personal and academic confidence level, from 1-5. The range came in at:

1-3

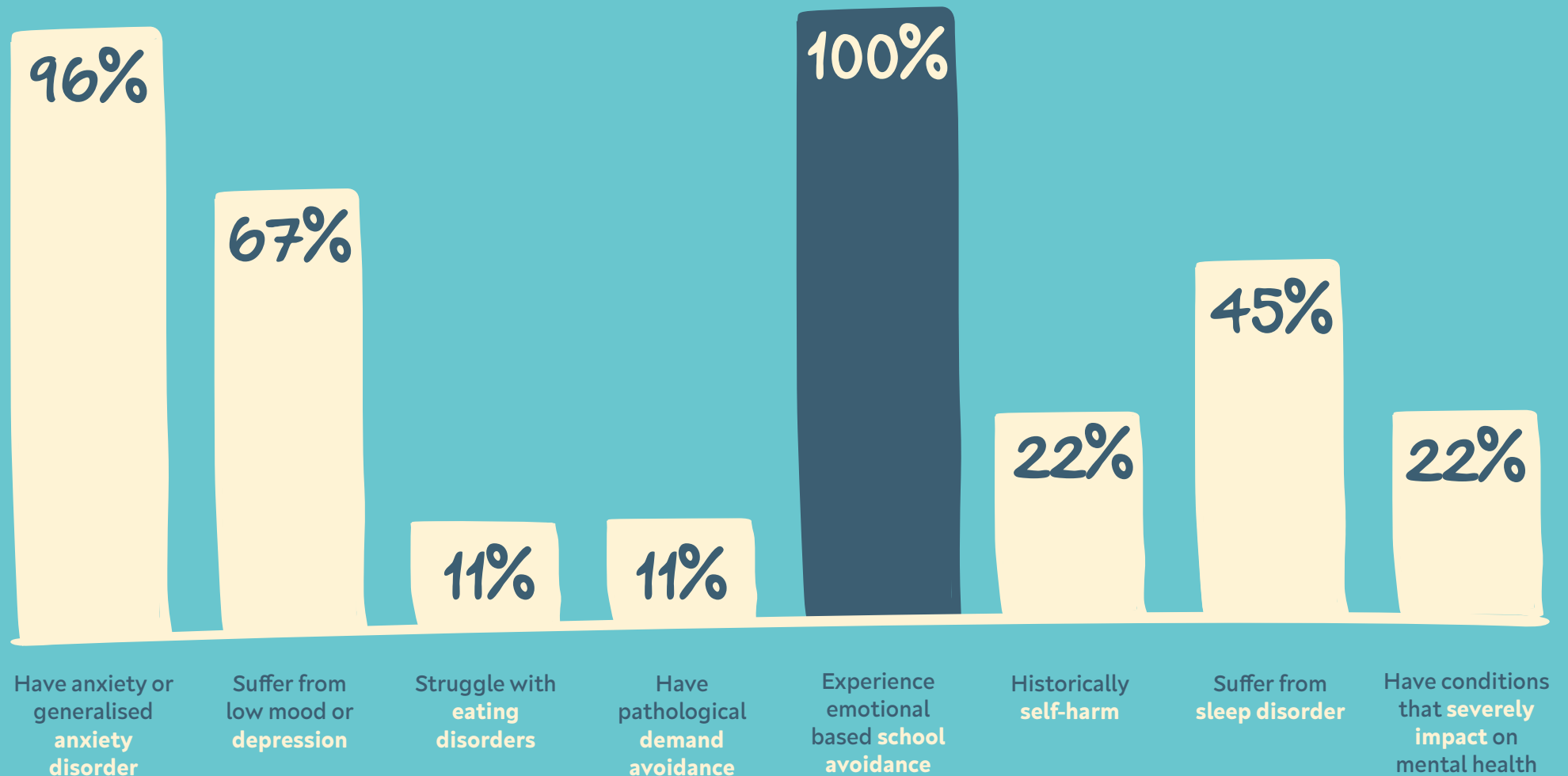


In July 2024, these same students were asked again. The results were:



1 is very little and 5 is more like their peers in mainstream education

The multiple challenges Gateways' Students face



“

We've just received Josh's GCSE results, and he passed! There are tears of joy around our house right now. We just can't believe how far Josh has come since he walked through your doors last autumn. This is an amazing achievement, he worked hard but he could not have done this without the extraordinary support of the whole team at Gateways.... Thank you thank you thank you, for all that you have done and continue to do, you have given him a life again and the family so much happiness.

Josh's mum



15 students graduated from Gateways
in July 2024, starting careers, apprenticeships
and moving onto further education.



In August 2024 Gateways saw...



100% pass-rate
for all vocational
qualifications taken

91% pass-rate
for GCSEs and Functional
Skill Certificates

41 exams
taken in total

Gateways offers...



Trained, empathetic educators



Facilitated & informal social events



Bespoke teaching & support programmes



Pastoral & wellbeing support



Enrichment activities



1:1 key worker support



Specialist SEN support



Professional careers advice



A breakfast & snack bar throughout the day



An in-house personal trainer & gym

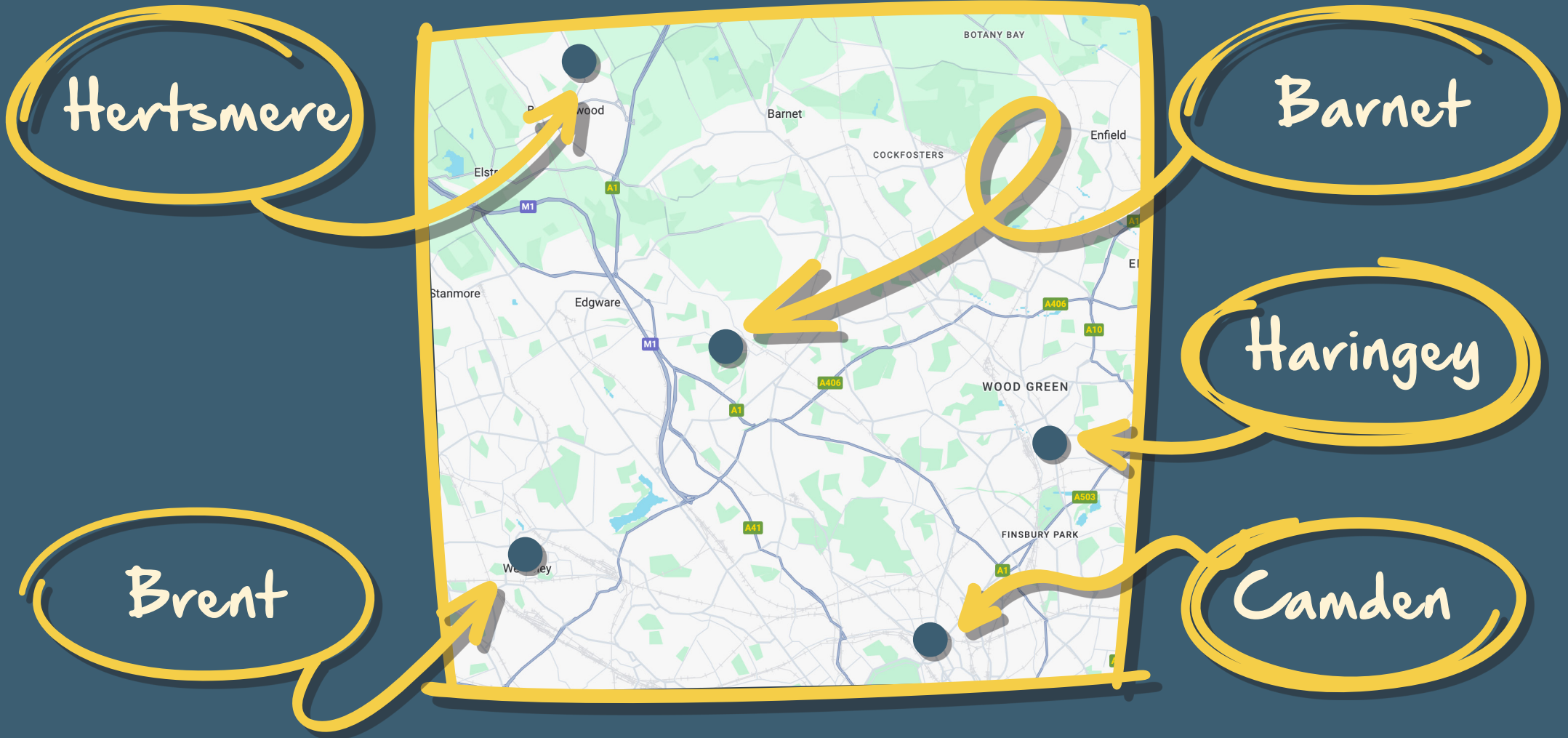


Tailored therapy & counselling sessions



Specialist support staff, therapist & admin professionals

Local authorities Gateways currently engages with



Hertsmere

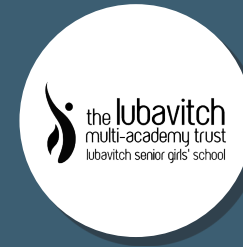
Barnet

Haringey

Brent

Camden

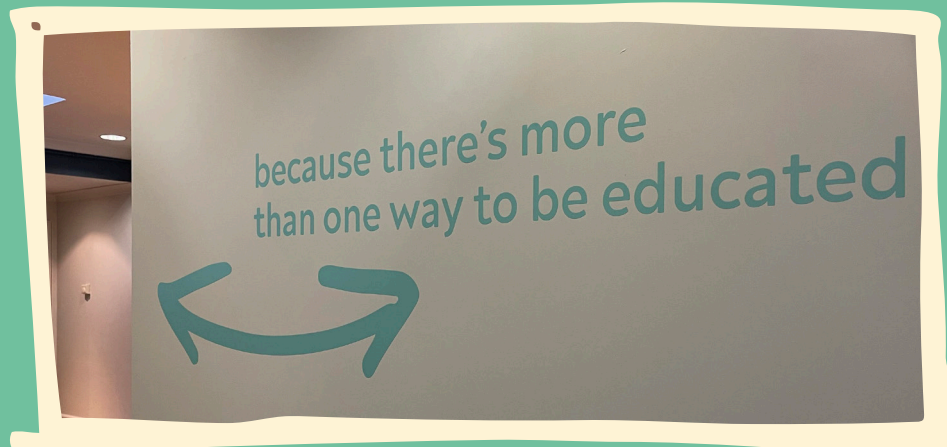
Referring mainstream schools

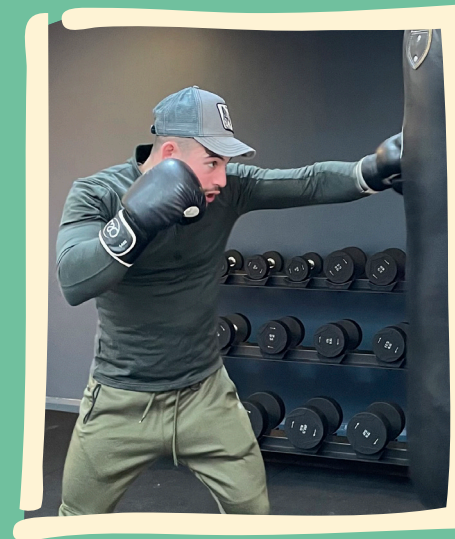


Referring organisations



A year in pictures





A picture is worth a thousand words...

A year in pictures





A picture is worth a thousand words...

Gateways are thrilled to have completed their first independent year. they could not have achieved so much and delivered so many opportunities without the backing of their Champions and supporters. Each of them have lead the way in making a difference to Jewish young people, unable to remain in mainstream schools, due to their mental health challenges.

CHAMPIONS

THE WOHL LEGACY
THE GERALD & GAIL RONSON FAMILY FOUNDATION
Rachel Charitable Trust
KC Shasha Charitable Foundation
Family Kandel
Matthew Elliott
Jewish Child's Day
The Speech, Language & Hearing Foundation
Conrad Morris Foundation
This Day Foundation
David & Marilyn Field z'l
Heathside Charitable Trust
Elliott Simmons Charitable Trust
Jack Livingstone Charitable Trust
Rebecca & Ed Barnett
Monday Charitable Trust
M&C Trust
Interaction
Hamlins LLP
Acrylicize
Pears Foundation
The Maurice Hatter Foundation
The Hobson Charity Limited
CST (Community Security Trust)
Phillip King Charitable Trust
The Childwick Trust
Wolfson Family Charitable Trust
The Baltic Charitable Foundation

ANGELS

Goldberg Family Charitable Trust
Adele & Michael Hunter
Deborah & Benji Field
Adrian L Cohen
The Sybil Shine Memorial Trust

FRIENDS

David Oppenheimer
Oxford & St Georges Jewish Youth Trust

Some supporters choose to not be listed above and remain anonymous



Meet the Gateways team

SENIOR LEADERSHIP TEAM

Founder & CEO
Laurence Field

Head Teacher
Sasha Sharpe

Head of Teaching & Learning
Caroline O'Coy (Starting January 2025)

SENCo
Sam Blendis

Head of Pastoral Care
Sarah Mendelsohn

Operations Manager
Josh Gershuny

CHAIR OF TRUSTEES

Ruth Green

TRUSTEES

Julia Alberga
Nicki Cohen
Dr Andrew Hope
Mark Hurst
Patrick Moriarty
Sam Sanders
Aviva Steinberg

HONORARY PRESIDENT

Professor David Latchman CBE



For more information
visit gateways.org.uk

020 8183 0164 · info@gateways.org.uk
Edgeworth Close, London NW4 4HJ
A WOHL RONSON PARTNERSHIP

Gateways was founded by Laurence Field in 2013 at The LJCC. Between 2015-2023, JW3 Gateways was a core JW3 social action programme. In September 2023, due to increased demand and its continued success and growth, it graduated from JW3 and became an independent registered educational charity, Gateways.

National Stats have been collected from a range of studies and news reports including: systemc.com, theguardian.com, ncbi.nlm.nih.gov, centreforsocialjustice.org.uk, explore-education-statistics.service.gov.uk

gateways
because there's more
than one way to be educated 

Registered charity number: 1201455. ©2024 gateways