



# gateways

because there's more  
than one way to be educated



---

## Impact Report 23/24

A WOHL RONSON PARTNERSHIP

“

**My mission has always been to offer an alternative path for those who have struggled to stay in mainstream education due to social, emotional and mental health challenges, giving them a different way to learn without the pressure of conforming to traditional systems. Not all students thrive in the same environment.**

**At Gateways, we provide students with the freedom to succeed in their own way. In our new independent purpose built space, we are more equipped than ever to provide the focused and holistic support our students need. Our first year in this new home hasn't just been a new chapter - it's been an exciting leap in our journey to transform young lives.**

Laurence Field, Founder



1.7m

young people persistently missed school... an alarming

{ 800,000 }

increase since pre-pandemic

Josh is 15 years old and since starting secondary school, his attendance fell from

96%  
↓ to ↓  
34%



Josh suffers from social anxiety, which first presented around 6 months into starting his new school.



Josh's parents have sought help from medical professionals, social workers and school counsellors.



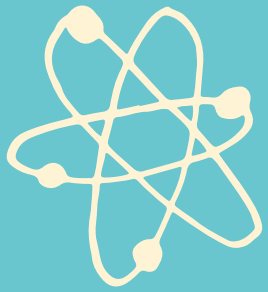
His mum eventually had to change careers and find a new job that allowed her to work remotely.



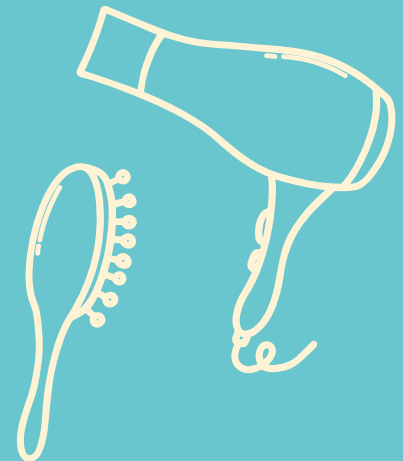
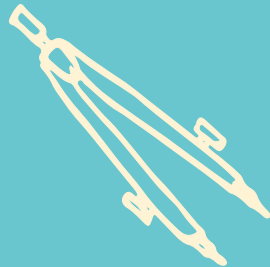
Josh's parents had nowhere to turn, they were in a really dark place. And then there was a glimmer of hope when they were introduced to Gateways, a new alternative education provider that opened in September 23. *Josh joined that October.*



*76 students,* including Josh, all of whom had previously been persistently absent from school, attended weekly lessons in its new purpose built home in Hendon.



Gateways offers a diverse curriculum covering 12 subjects, including Maths, English, Science, Life Skills, Hair and Beauty, Cooking, Gym Instruction, Art and IT.



# Social ~~exclusion~~

increases the risk of self-harm  
and suicidal ideation

Gateways received 125 admission enquiries last year from distressed parents, carers and refereeing organisations.



122 teaching hours were delivered each week. Josh attended classes in Maths and English and made new friends in his weekly BTEC Home Cooking Skills class and his GCSE Science lessons, where virtual reality headsets are used as a teaching aid!



Absenteeism  
has doubled

in the last 2 years across UK schools

Gateways has partnerships with 23 referring organisations, schools, local authorities and other charities too.



Josh was introduced and referred to Gateways by another Jewish charity. Part of his journey at Gateways is a weekly therapy session.

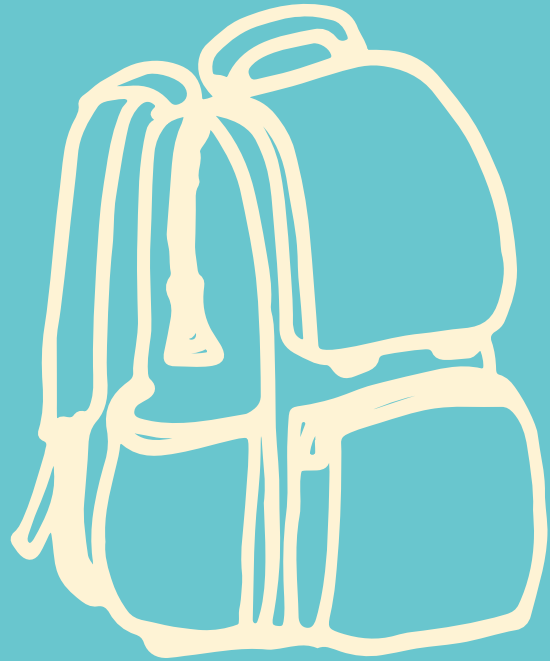
636 therapy hours

were delivered in 2023/24, including art therapy, set in purposefully designed rooms.



1 in 10

young people are NEET  
(not in education, employment, or training)



21% of students were eligible for assistance through Gateways' hardship fund, including food vouchers and travel assistance.





Students attending Gateways have an average attendance rate of:

✦ ✦ ✦ **91%**

...compared to a prior mainstream schools average of:

!! **34%**



In Sept 2023, Gateways students were asked to score their personal and academic confidence level, from 1-5. The range came in at:

1-3

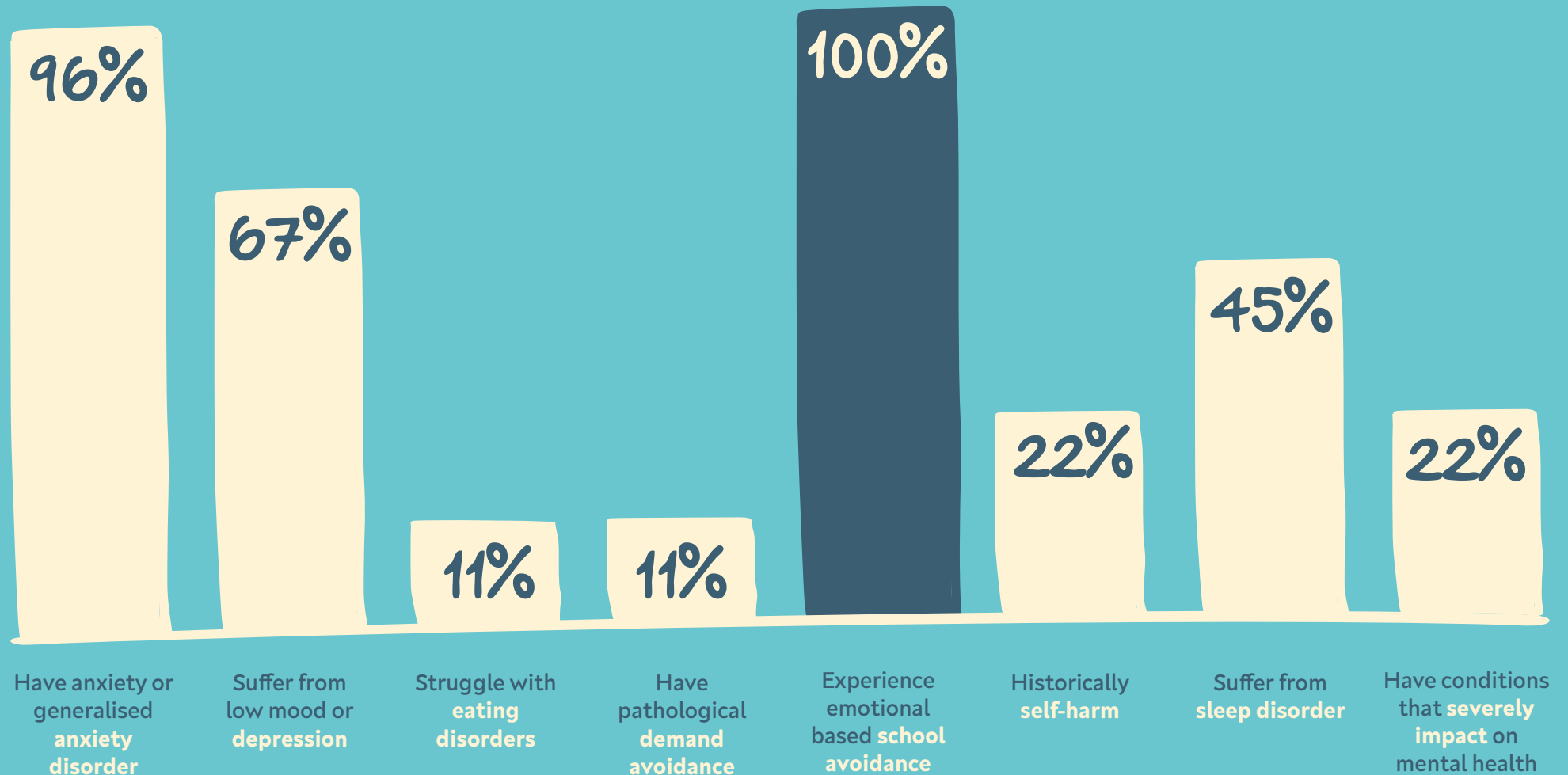


In July 2024, these same students were asked again. The results were:



1 is very little and 5 is more like their peers in mainstream education

# The multiple challenges Gateways' Students face



“

**We've just received Josh's GCSE results, and he passed! There are tears of joy around our house right now. We just can't believe how far Josh has come since he walked through your doors last autumn. This is an amazing achievement, he worked hard but he could not have done this without the extraordinary support of the whole team at Gateways.... Thank you thank you thank you, for all that you have done and continue to do, you have given him a life again and the family so much happiness.**

Josh's mum



15 students graduated from Gateways  
in July 2024, starting careers, apprenticeships  
and moving onto further education.



In August 2024 Gateways saw...



100% pass-rate  
for all vocational  
qualifications taken

91% pass-rate  
for GCSEs and Functional  
Skill Certificates

41 exams  
taken in total

# Gateways offers...



Trained, empathetic educators



Facilitated & informal social events



Bespoke teaching & support programmes



Pastoral & wellbeing support



Enrichment activities



1:1 key worker support



Specialist SEN support



Professional careers advice



A breakfast & snack bar throughout the day



An in-house personal trainer & gym



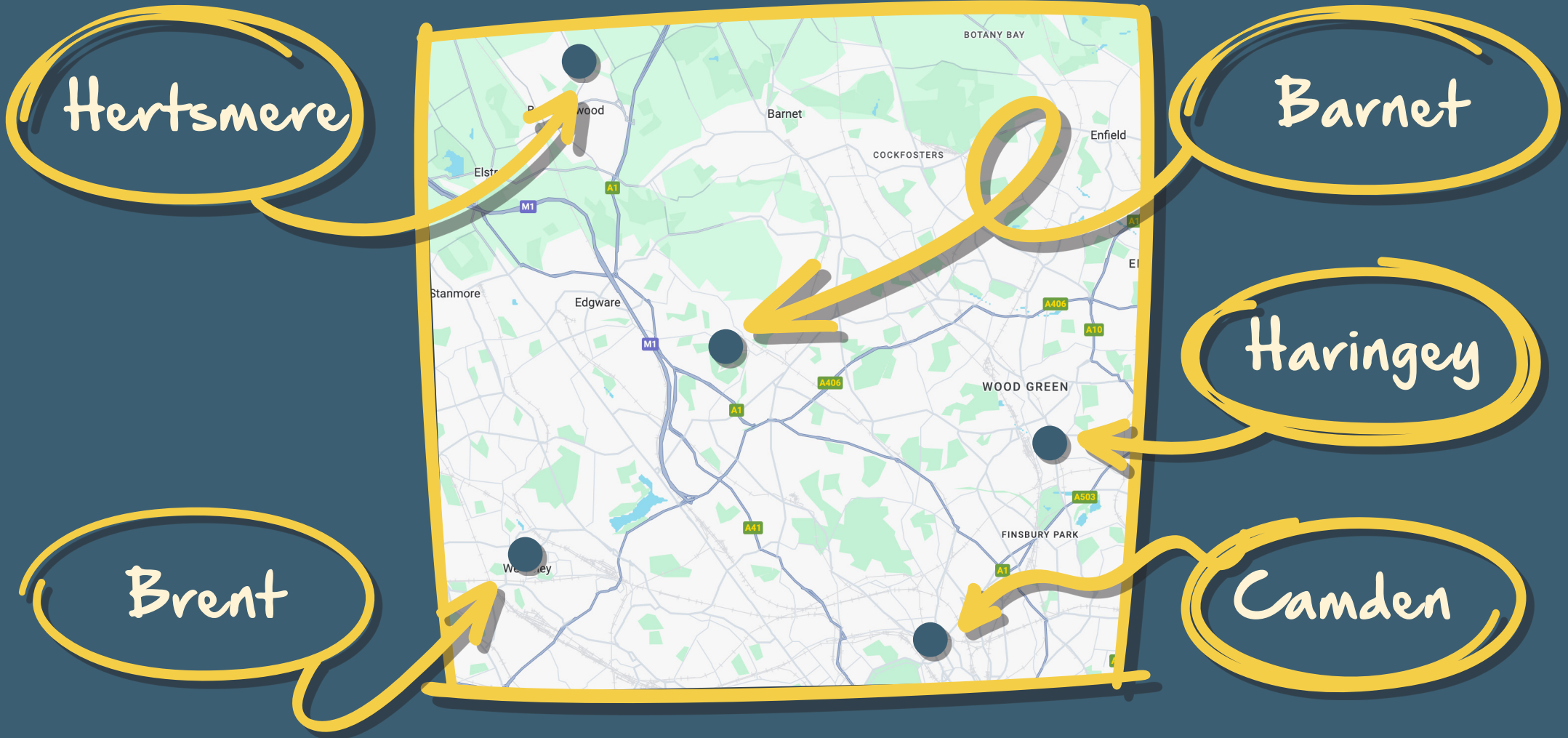
Tailored therapy & counselling sessions



Specialist support staff, therapist & admin professionals



# Local authorities Gateways currently engages with



Hertsmere

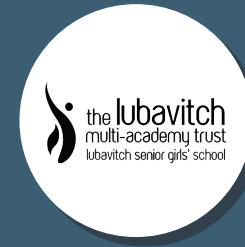
Barnet

Haringey

Brent

Camden

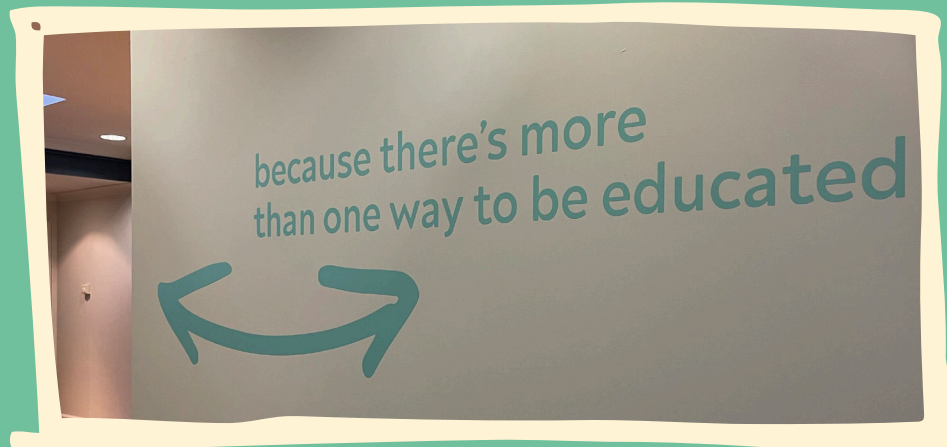
# Referring mainstream schools



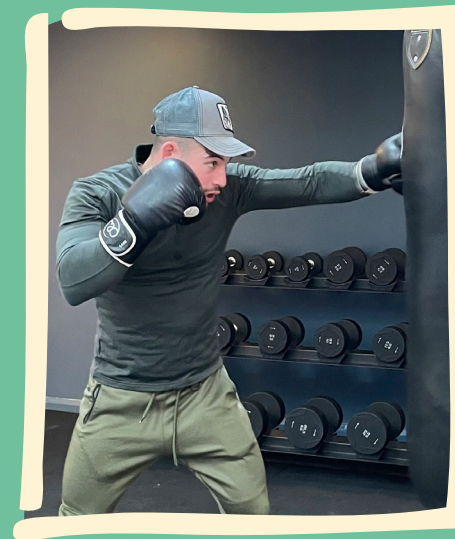
# Referring organisations



# A year in pictures







A picture is worth a thousand words...



# A year in pictures







A picture is worth a thousand words...

**Gateways are thrilled to have completed their first independent year. they could not have achieved so much and delivered so many opportunities without the backing of their Champions and supporters. Each of them have lead the way in making a difference to Jewish young people, unable to remain in mainstream schools, due to their mental health challenges.**

## **CHAMPIONS**

---

THE WOHL LEGACY  
THE GERALD & GAIL RONSON FAMILY FOUNDATION  
Rachel Charitable Trust  
KC Shasha Charitable Foundation  
Family Kandel  
Matthew Elliott  
Jewish Child's Day  
The Speech, Language & Hearing Foundation  
Conrad Morris Foundation  
This Day Foundation  
David & Marilyn Field z'l  
Heathside Charitable Trust  
Elliott Simmons Charitable Trust  
Jack Livingstone Charitable Trust  
Rebecca & Ed Barnett  
Monday Charitable Trust  
M&C Trust  
Interaction  
Hamlins LLP  
Acrylicize  
Pears Foundation  
The Maurice Hatter Foundation  
The Hobson Charity Limited  
CST (Community Security Trust)  
Phillip King Charitable Trust  
The Childwick Trust  
Wolfson Family Charitable Trust

## **ANGELS**

---

Goldberg Family Charitable Trust  
Adele & Michael Hunter  
Deborah & Benji Field  
Adrian L Cohen  
The Sybil Shine Memorial Trust

## **FRIENDS**

---

David Oppenheimer  
Oxford & St Georges Jewish Youth Trust

Some supporters choose to not be listed above and remain anonymous



# Meet the Gateways team

## **SENIOR LEADERSHIP TEAM**

Founder & CEO  
**Laurence Field**

Head Teacher  
**Sasha Sharpe**

Head of Teaching & Learning  
**Caroline O'Coy** (Starting January 2025)

SENCo  
**Sam Blendis**

Head of Pastoral Care  
**Sarah Mendelsohn**

Operations Manager  
**Josh Gershuny**

## **CHAIR OF TRUSTEES**

Ruth Green

## **TRUSTEES**

Julia Alberga  
Nicki Cohen  
Dr Andrew Hope  
Mark Hurst  
Patrick Moriarty  
Sam Sanders  
Aviva Steinberg

## **HONORARY PRESIDENT**

Professor David Latchman CBE



For more information  
visit gateways.org.uk

020 8183 0164 · info@gateways.org.uk  
Edgeworth Close, London NW4 4HJ  
A WOHL RONSON PARTNERSHIP

Gateways was founded by Laurence Field in 2013 at The LJCC. Between 2015-2023, JW3 Gateways was a core JW3 social action programme. In September 2023, due to increased demand and its continued success and growth, it graduated from JW3 and became an independent registered educational charity, Gateways.

National Stats have been collected from a range of studies and news reports including: systemc.com, theguardian.com, ncbi.nlm.nih.gov, centreforsocialjustice.org.uk, explore-education-statistics.service.gov.uk

**gateways**  
because there's more  
than one way to be educated 

Registered charity number: 1201455. ©2024 gateways