



A WOHL RONSON PARTNERSHIP

gateways

because there's more
than one way to be educated



A year of growth and change
Impact Report 2025/26

100%

of leavers said they would recommend Gateways to a student in a similar situation



31

students graduated with 100+ qualifications between them



20%

growth in students supported



13

courses on offer

An average of

28

new enquiries per term



70

students supported in the last year



A message from our Founder and Chair



Laurence Field,
CEO

Welcome to the latest Gateways Impact Report. We are proud to reflect on the last year – a year of growth, learning, and meaningful change, made possible by our dedicated staff, the trust of families, and the extraordinary resilience of the young people we support.

As the community's **only Jewish alternative provision**, Gateways plays a unique and vital role in meeting the needs of young people who require a tailored, values-led approach to education and support.

At the heart of Gateways is a simple but powerful belief: **every young person deserves an education, no matter the challenges they face**. We work with young people who are out of education, helping them move from stagnation to movement, and from despair to hope. By providing a safe, supportive space, we enable them to re-engage with education while also developing the skills, confidence and readiness for the future.

This mission sits firmly within the national context highlighted in the Government's recent white paper, which emphasises the importance of early support, inclusion, and high-quality alternative provision for young people who struggle to access mainstream education. It reinforces the critical role of alternative provision settings in providing tailored pathways, safeguarding engagement in learning, and ensuring that no young person is left without access to education.

This year, enquiries rose, reflecting both the growing need for alternative education provision and the trust placed in Gateways by young people, families and professionals. Alongside this increased demand, we have witnessed remarkable progress and inspiring successes that demonstrate the real and lasting impact of our work.

None of this would be possible without the continued support of our partners, supporters, and community. We hope this report shows the difference Gateways is making and encourages you to continue supporting our work.



Ruth Green,
Chair of Trustees



800

students supported
since our launch in 2014

About Gateways

The difference we make

Gateways is an alternative education provider supporting young people in Year 9 and above who struggle to remain in mainstream education due to social, emotional, and mental health challenges e.g. anxiety, depression and traumas of all kinds.

At Gateways, we believe every young person deserves the opportunity to progress and thrive, regardless of the barriers they face.

Increasingly, we are seeing a **significant rise in students experiencing Emotionally Based School Avoidance (EBSA)**, which has become central to our mission and daily practice.

EBSA is not simply about school refusal; it reflects deep underlying anxiety, trauma, and unmet emotional needs that make mainstream environments overwhelming or unmanageable for many young people. Our approach is specifically designed to respond to this growing need with understanding, flexibility, and expertise.

Through a highly flexible, responsive, and **student-centred model**, delivered within a **safe and nurturing environment**, Gateways provides hope, direction, and achievement. Our high-quality teaching and bespoke provision create a vital stepping stone, **helping young people re-engage with education, rebuild confidence, and develop the skills they need for their future.**

Understanding **EBSA**

Why our work matters

At the heart of Gateways' mission is supporting young people experiencing Emotionally Based School Avoidance (EBSA).

EBSA describes a situation where a child or young person struggles to attend school due to overwhelming emotional distress. Unlike truancy, EBSA is not about a lack of willingness to learn. Instead, school attendance becomes associated with anxiety, fear, emotional overwhelm, or an inability to cope with the demands of the school environment.

For many families, EBSA can be an isolating and exhausting experience. Parents often find themselves navigating complex systems while trying to support a child whose mental health and wellbeing are deteriorating. Young people can become disconnected from education, friendships, and the routines that help them thrive.

At Gateways, we believe that every young person deserves an education that meets their needs. Through **specialist support, therapeutic approaches, and highly personalised learning programmes**, we help students rebuild confidence, re-engage with learning, and take positive steps towards their future.



Over
500
hours of therapy
delivered per year

Wellbeing

Because wellbeing is at the heart of what we do

Wellbeing and therapeutic support at Gateways

We understand that many of our students carry heavy emotional burdens, and we are committed to providing a **safe, caring space** where they feel truly supported. Our dedicated wellbeing and therapy team work alongside teaching staff to offer **one-to-one therapy sessions** as well as warmth and understanding through simple acts, whether it's a friendly check-in, a relaxed chat over coffee, or a game of table tennis that breaks down walls and builds trust.

Our impact in practice:

- * A dedicated wellbeing team providing consistent, relational support throughout the school day
- * Access to psychotherapy and art therapy delivered in a safe, nurturing environment
- * Support for students receiving therapy externally, ensuring continuity of care and a joint approach
- * Support designed to reduce isolation, strengthen relationships, and help students feel part of a community including enrichment and social events
- * Daily informal well-being check-ins

This holistic approach reflects our belief that every young person deserves to feel heard, valued and cared for on their journey.



Education

Because there's more than one way to be educated

Our approach to education

At Gateways, we do things differently. Our approach to education is built around **respect, flexibility, and understanding**, recognising that many of our students have had challenging experiences within traditional education settings. We create an environment where young people feel **safe, valued, and empowered** to take ownership of their learning. Rather than relying on rigid rules or punitive systems, we focus on **relationships, trust, and personalised support** to help students re-engage and thrive.



We deliver education by:

- * **Creating** an informal, inclusive environment where first-name terms and the absence of uniforms reduce barriers
- * **Collaborative** learning with students and staff, ensuring the curriculum reflects individual needs, interests, and learning styles
- * **Adopting** a flexible, responsive structure to the day, allowing education to adapt around each student
- * **Recognising** and celebrating attendance and engagement in all forms
- * **Empowering** young people through encouragement and support
- * **Supporting** teachers to use creative, innovative approaches that engage students meaningfully
- * **Delivering** teaching in small groups so students feel safe & supported
- * **Building** strong, trusting relationships that place wellbeing at the heart of learning

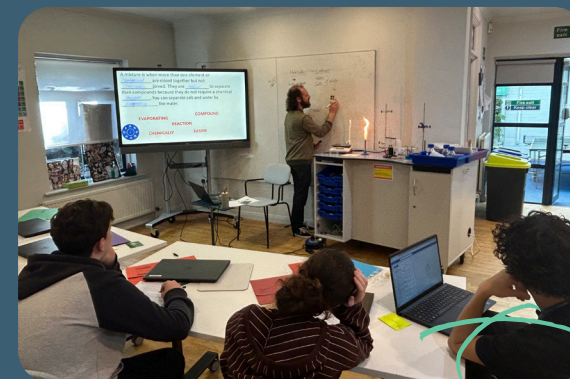
This year, we have continued to expand and diversify the range of courses we offer, supporting students to build confidence, gain recognised qualifications, and explore their interests and passions. Alongside core subjects such as Maths and English, students have been able to access a **broad and engaging curriculum**.

Teaching hours delivered per week

2023/24	2024/25
122 hours	150 hours
This year 160 hours	

Sixth Form

This year, we launched a new **sixth form provision** to support post-16 students who are not yet ready to progress into further education. The programme provides students with the opportunity to continue their studies at Gateways through a range of BTEC courses, including Business Studies and Food and Hospitality, helping them to build confidence, develop practical skills and prepare for their next steps.



Our courses

Maths

Entry level certificate
Functional skills level 1
Functional skills level 2
GCSE

English

Functional skills level 1
Functional skills level 2
English literature GCSE
English language GCSE

Photography GCSE

Combined Science GCSE

GCSE Biology

Vocational

BTEC Home Cooking Skills
VTCT level 2 certificate in Hair & Beauty



From stagnation to growth

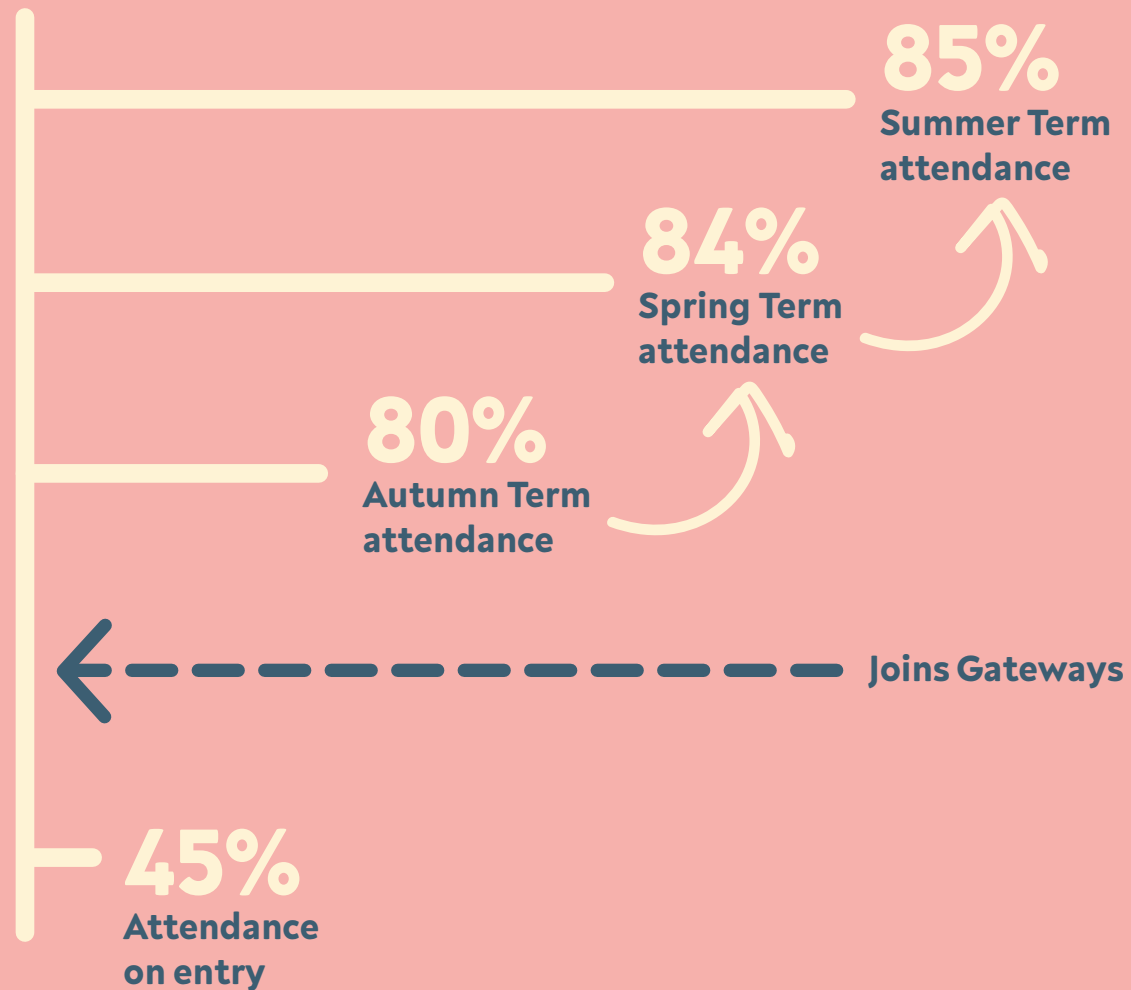
Attendance rate

Many students arrive at Gateways following prolonged disengagement from education. Prior to enrolment, average attendance was just 45%, with some young people not attending at all or engaging only sporadically.

Many students are accessing full-time education for the first time in several years.

Improved attendance reflects increased engagement, stability, and wellbeing.

Outcomes demonstrate the impact of Gateways' flexible, nurturing, and individualised approach for young people who have struggled in mainstream education.



Results



Reach and impact

The growth we have seen in the last 12 months reflects the rising demand for an alternative education provision and the trust placed in Gateways by young people, families, and referring professionals.

Consistent weekly engagement enables strong relationships and personalised support, helping young people to re-engage with education and move forward positively.



89%

pass rate across all qualifications



Thank you will never be enough. I never thought that someone like me could get an education, but you have made these dreams come true.”



The year we built together



Enrichment, gym and social

Because there's more than one way to learn

Enrichment at Gateways

Enrichment at Gateways is at the heart of our holistic approach to education. It gives students the chance to develop confidence, build essential life skills, make friends, and enjoy activities beyond the classroom - opportunities they may have missed due to disrupted education. Led by our Enrichment and Attendance Leads, the programme runs all year and is open to every student. Activities range from structured sessions to informal social experiences, creating a safe and welcoming environment where young people can flourish.

Our enrichment activities have included:

- * **Weekly sessions:** guest speakers, discussion groups, wellbeing sessions, PSHE, student voice committee
- * **Social activities:** movie nights, table tennis, talent shows
- * **Outings:** bowling, trampoline park, rock climbing and other off-site trips to build confidence and independence
- * **Festivals and celebrations:** themed activities for key Jewish festivals like Chanukah and Purim
- * **Activity Weeks (twice a year):** students came off their usual timetable to take part in creative workshops, talks, group activities, and a social action project
- * **Annual residential trip:** older students took part in a two-night trip outside London to develop independence, teamwork, and personal growth



Enrichment is a vital part of life at Gateways, helping students feel included, supported, and ready to thrive - both inside and outside the classroom.

Gym & physical wellbeing at Gateways over the last year

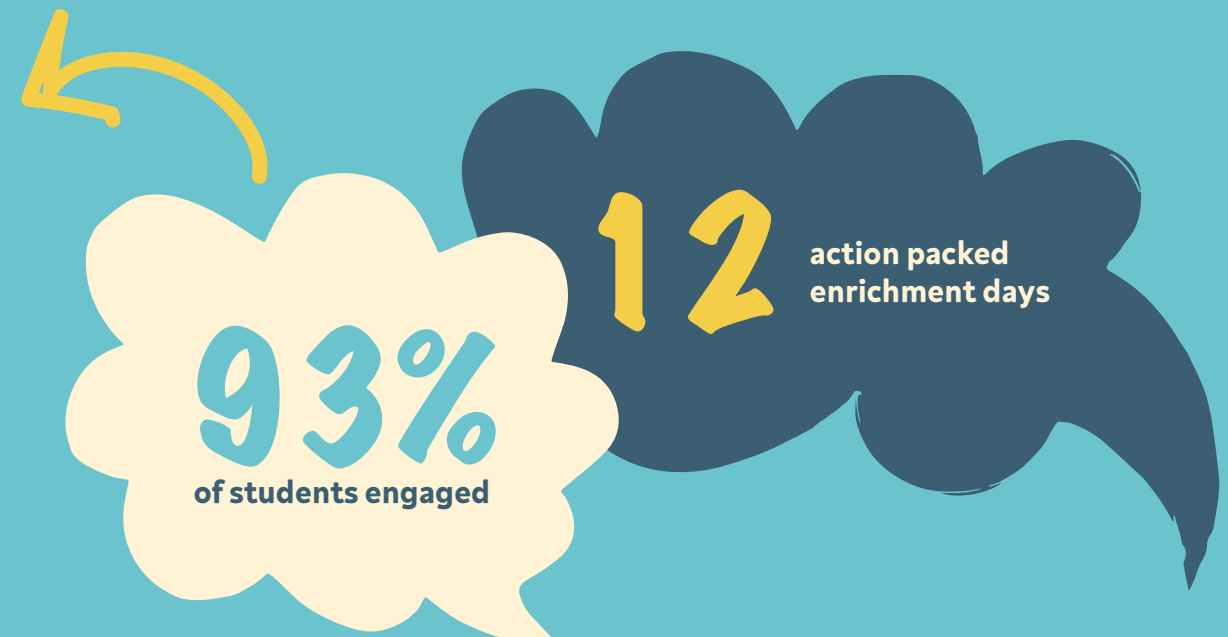
Purpose: Supported students' physical and mental wellbeing, confidence, and personal development in a safe, inclusive environment.

One-to-one training: Personalised fitness plans with our in-house trainer, Ace, to develop skills, motivation, and goal-setting.

Drop-in sessions: opportunities to exercise alongside peers and enjoy physical activity in a supportive setting.

Led by Ace Breuer, a former Gateways student and now fitness professional, showing students what dedication and hard work can achieve.

Impact: The gym promotes mental and physical health, resilience, confidence, and self-care, becoming a cornerstone of our holistic approach to student wellbeing.



Work experience and careers offer



We have launched a careers programme enabling students to access careers guidance and support through a dedicated careers coach, helping them think about their next steps after Gateways. We have also offered work experience opportunities through our recent fundraising dinners for around 30 guests. Our cooking students catered the meals, giving them the opportunity to work in a real-life setting, showcase their food, and build confidence.

Our Hair and Beauty students were invited to support the WIZO Fashion Show, where they were responsible for styling the models' hair and makeup. This provided an excellent opportunity for students to gain valuable hands-on work experience, develop their professional skills and work in a live event environment.

Gateways is now looking to launch a Food Truck Social Enterprise. Students aged 16–18 will play an active role in establishing and running the Food Truck Social Enterprise. They will:

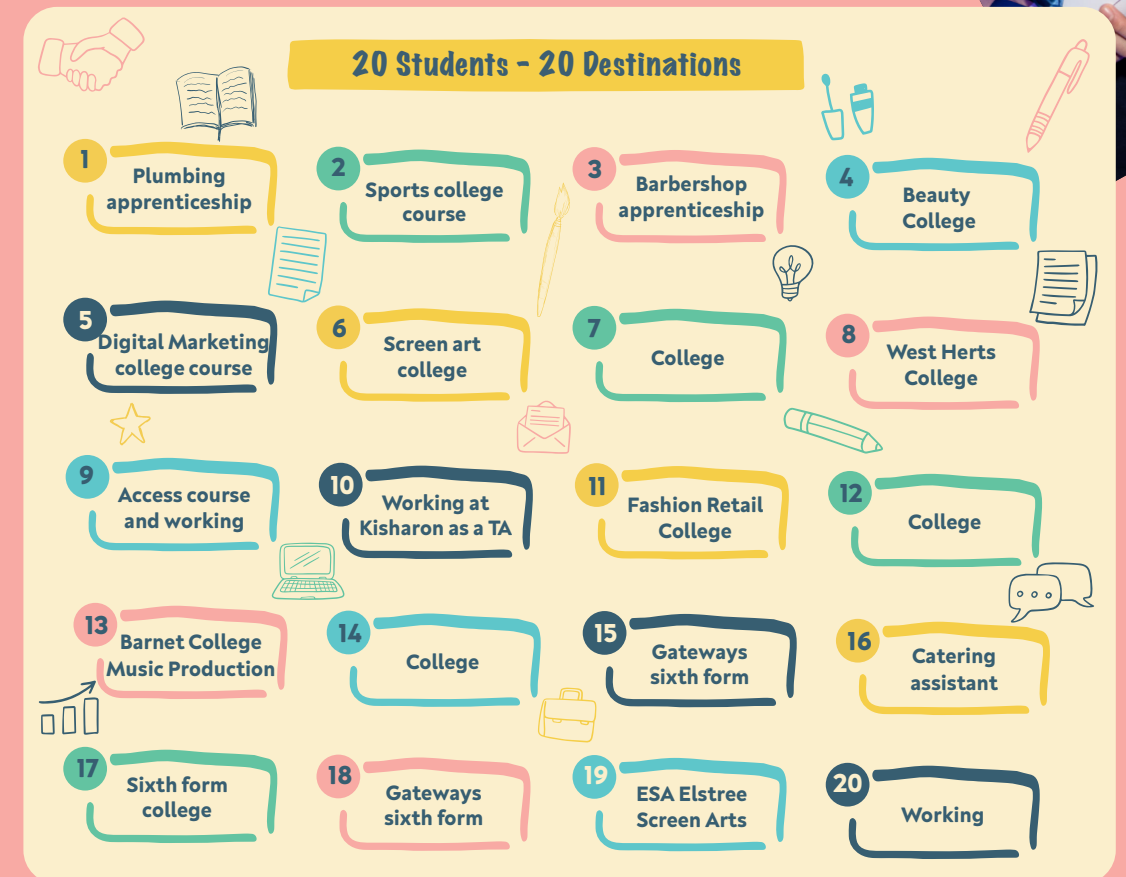
- * Prepare food in the Gateways training kitchen at our Hendon centre
- * Operate the food truck at approximately 10 events each year
- * Engage in sales, customer service, and marketing
- * Contribute to planning, budgeting, and stock management



Onward journey beyond Gateways - 2025 leavers

Last year, 20 students graduated from Gateways and successfully moved on to their next steps. We are incredibly proud of each of them and delighted to share their onward journey, which represents an important milestone beyond Gateways.

A key part of their time with us is ensuring that students are supported to identify and move into positive next steps, with guidance from our careers advisers and wider support staff. This work is central to our approach and helps each young person to plan a pathway that is meaningful and appropriate for their individual goals and aspirations.



Because our students count

Gateways alumni Ayelet, who left in July 2025, is now a qualified personal trainer and successfully running her own PT business. Ayelet's story is one of many success stories to come through our doors, highlighting what young people can achieve when given the right support, opportunities and encouragement.

“Being here at Gateways has taught me more than just academics. When I came here, I didn't just find a college, I found people who made me feel heard, safe, supported, and understood.”



Written during her time at Gateways, this poem offers a glimpse into Ayelet's experiences and reflections.

Feeling anxious and overwhelmed,
always on the run.

Trying to get somewhere
I haven't even begun.

There were times I felt like quitting,
'Cause I've been trying
but never quite hitting.

They say slow down,
take a deep breath,
One step at a time,
embrace the journey,
not just the quest.

Where you're running,
there's no race to be won,
You'll get to where you need to,
when the time has come.

When you're tired, rest - don't quit,
just pause,

Reflect on your journey,
and give yourself applause.

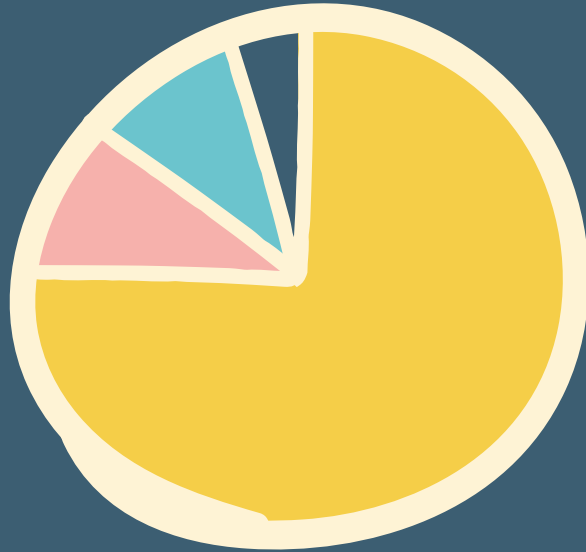


Fundraising

Because your support matters

Income breakdown

- * 13% Local authority funding
- * 12% Course fees
- * 70% Fundraising (trusts, foundations (48), individual donors (22))
- * 5% Events



Maccabi Fun Run



'A Taste of Hope' dinner

How funds make an impact:

Gateways relies on fundraising to deliver the tailored education, enrichment, and pastoral support our students need. These funds allow us to provide small-group teaching, specialist courses, and extra-curricular activities that enhance learning, wellbeing, and confidence.

A portion supports our bursary scheme, ensuring that students from families with financial challenges can still access Gateways' programmes.

Successful fundraising underpins everything we do, helping maintain a high-quality, inclusive provision where every young person has the opportunity to learn, grow, and thrive, regardless of their circumstances.



An Evening with Jack Whitehall



Sponsored swim



Golf day



Janette's Garden opening



Moonlight Walk



Young Gateways launch event



Sunday brunch



Mezuzah campaign

EBSA conference

In response to this growing issue, Gateways partnered with PaJeS in January, to deliver our first dedicated EBSA Conference, welcoming more than 80 parents and family members from across the community.

The conference was created to provide something that many families affected by EBSA tell us they desperately need: **understanding, connection, and hope.**

Throughout the event, attendees heard from a range of experts and speakers, including a keynote speaker with lived experience of EBSA, a panel of professionals working in education and mental health, members of the Gateways team who shared practical strategies for supporting young people experiencing school avoidance, and educational lawyers providing families with legal advice about their rights.

Most importantly, the conference created **a space where families could come together, share experiences, and realise they were not alone.** For many attendees, simply being surrounded by others facing similar challenges provided reassurance and renewed confidence.

The success of the conference reinforced the importance of community, collaboration, and specialist support in addressing the growing challenge of Emotionally Based School Avoidance. **We are proud to have played a role in bringing families together and look forward to continuing this work in the years ahead, including our second conference taking place in 2027.**



Thank you

to all our Champions, Angels, Friends and supporters.

Meet the team

- Laurence Field - CEO
- Ruth Heller - Director of Education
- Jemma Sager - COO
- Sam Blendis - SENCo

For any fundraising enquiries, please contact our Fundraising Events Manger, Natalie Meltzer at natalie.meltzer@gateways.org.uk

To meet the rest of our team, please visit gateways.org.uk/the-team

Referrers

The mainstream schools we partner with:

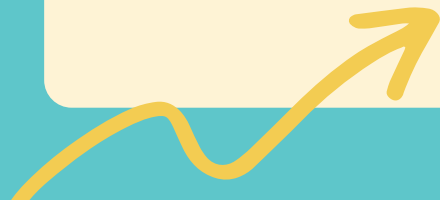
- * Yavneh College
- * Hasmonean Boys
- * Hasmonean Girls
- * JCOSS
- * Lubavitch Senior Girls School
- * Menorah High School for Girls
- * Totteridge Academy
- * Rickmansworth School

Engaging with local authorities:

- * Hertfordshire
- * Barnet
- * Camden

Referring organisations:

- * The Boys Clubhouse
- * Noa
- * Mavar
- * Geshar EU
- * Jami
- * Elstree Screen Arts



gateways

because there's more
than one way to be educated



**All we wanted was a child who felt safe,
who felt secure in herself, and who had a
place she felt she belonged. Gateways
gave us that and more.”**

Parent, June 2026



gateways.org.uk

020 8183 0164 • info@gateways.org.uk • Edgeworth Close, London NW4 4HJ

A Wohl Ronson partnership